



VALLETTA
CRUISE PORT



CRUISE | FERRY



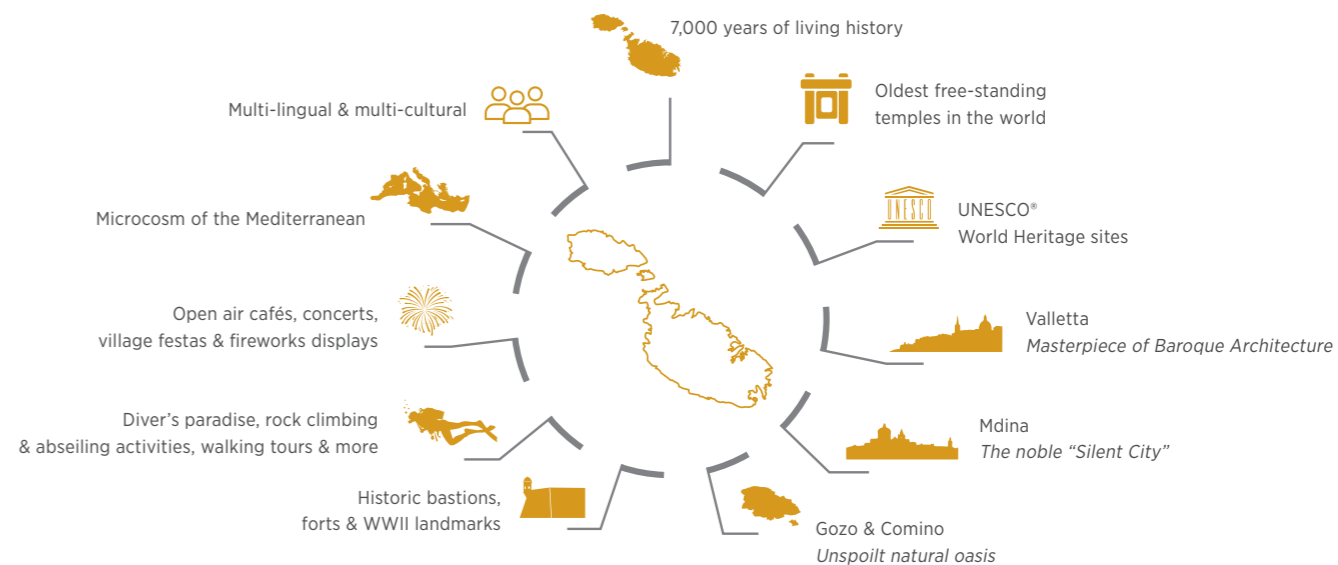
Discover Malta...

Imagine sailing into a historic natural port which hosted famous explorers and traders, from the Phoenicians to the Romans, from the Arabs to the British, and others. Malta's Grand Harbour is one of the most breathtaking ports in the world which has been celebrated by numerous famous authors and explorers spanning centuries and continents.

A moment away is the islands' capital city of Valletta, a 16th century masterpiece built by the Knights of St. John, designated as a UNESCO World Heritage Site. Described as a city "built by gentlemen for gentlemen", Valletta is home to over 300 places of interest, within an area of 55 hectares.

The archipelago of islands, centrally located in the Mediterranean Sea, is truly a melting pot of major world civilizations and the point where cultures converge. This marriage has allowed us the gift of understanding true diversity, an international quality which translates into warm hospitality.

Malta's best kept secret is the sister island of Gozo, a unique oasis for visitors. This tiny island boasts a laid-back lifestyle and its eco-friendliness attracts the most discerning worldwide travellers.





STRATEGIC LOCATION

Malta is strategically positioned in the centre of the Mediterranean offering multiple options for any Mediterranean itinerary through its appealing combination of location, practicality and versatility.

DISTANCES TO VALLETTA in Nautical Miles

AJACCIO	468
BARCELONA	695
CIVITAVECCHIA	406
DUBROVNIK	471
GENOA	580
GIBRALTAR	995
GOZO	13
LIVORNO	535
MESSINA	155
MONACO	600
NAPLES	380
PALERMO	220
PALMA	612

PIRAEUS	517
RAVENNA	691
TUNIS	226
VENICE	810

Source: MedCruise



PORT SERVICES

VALLETTA CRUISE PORT TARIFFS
Available upon request

MAIN PORT CHARGES
Regulated by Transport Malta

PORT OPERATIONS
24/7 year-round Valletta Port Control
+356 2555 4491 / +356 2555 4492 /
+356 9949 4313

PORT SECURITY OFFICER
+356 2555 4400

HARBOUR MASTER
+356 2555 4401 / +356 9942 9490

CUSTOMS & IMMIGRATION
Customs officers, quarantine
and immigration officials
are available 24/7 year round

CUSTOMS (BAGGAGE ROOM)
+356 2123 3014 / +356 2123 3868

IMMIGRATION POLICE
+356 2123 2469 / +356 2122 4001

COACHES
May be positioned directly
on quays. Prior registration
with Valletta Cruise Port required

ON SITE TRANSPORTATION
Taxis, public and open-top buses,
horse cabs, traditional boats, the Upper
Barrakka Lift, fast ferry, and parking
facilities

PILOTAGE
24/7 year round

LINESMEN
24/7 year round

TOWAGE
Available, but not compulsory

PORTER SERVICES
Available

BUNKERING
Fuel Grades - IFO range from
380 to 30 CST, gas oil (diesel);
Available via bunker barge
or road tanker

WATER
Fresh water available on
request by road bowser

**WASTE MANAGEMENT,
SEWAGE & RECYCLING**
Collection by authorised
waste collectors

SHIP REPAIR
Max. length of vessel: 400m;
Max. tonnage: 300,000 DWT

SHIP SUPPLIES
Available upon request

APPROACH INFORMATION

MALTA PILOTS

ETA
2 hour advance notice

BOARDING
Fairway Buoy Pilot Station

VHF CHANNEL
Channel 12

RADIO FREQUENCY
Call sign 9HD,
24/7 with WT, RT & VHF

RADIO PHONE FREQUENCY
2.625kHz

LISTENING FREQUENCY
2.182kHz

VHF CALLS
Channels 12/14/16
24/7 year round

No arrival / departure time or day restrictions

BERTHING



PINTO WHARVES

- QUAYS 1-2
- QUAY 3
- QUAYS 4-5
- WINE WHARF QUAY

SPILL-OVER QUAYS

- DEEP WATER QUAY
- BOILER WHARF QUAY
- LAB WHARF QUAY

MAX. LENGTH
360m*

MAX. WIDTH
No restrictions

MAX. BEAM
No restrictions

MAX. DRAUGHT
12m

MAX. PASSENGERS
No restrictions

TIDE VARIATION
Negligible

*to date

	PINTO WHARVES				SPILL-OVER QUAYS		
	Quays 1 - 2	Quay 3	Quays 4 - 5	Wine Wharf Quay	Deep Water Quay	Boiler Wharf Quay	Lab Wharf Quay
Length of quay	307m	171m	450m	73m	488m	383m	443m
Maximum vessel LOA	360m	220m	360m**	135m	333m	294m	360m
Minimum depth of water	11m	9.8m>11m	11m>12m	8m	9m	6.6m>8m	7.6m>15.7m
Height of quay above chart datum	2.2m	2.2m	2.2m	3.3m	3.14m	2.3m	2.2m
Number of bollards	16	8	17	5	33	17	12
Space between bollards	20m	20m	20-50m	15m	15m	9.8m>34.4m	20m
Fender type	cylindrical (foam-filled) 6m x 1.5m	V-type	cylindrical (foam-filled) 6m x 1.5m	cylindrical 1m x 0.8m	cylindrical 1m x 0.8m	cylindrical 1m x 0.8m	cylindrical 1m x 0.8m

**Increased after the planned structural changes

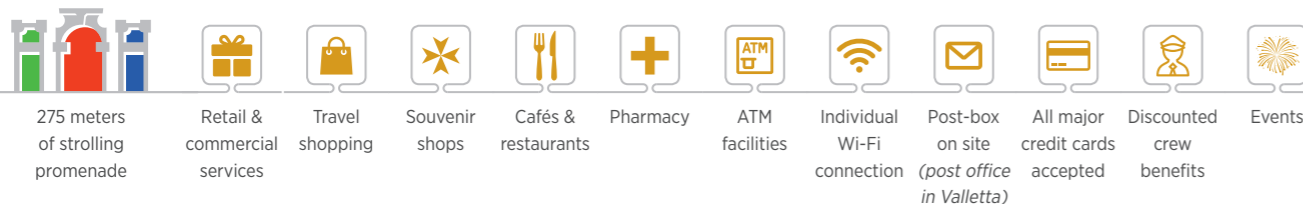


THE VALLETTA WATERFRONT

Step off the ship immediately onto the neighbouring Valletta Waterfront, an award-winning and favourite landmark on the Island of Malta. There are nineteen beautifully restored 18th century warehouses and bastions, built during the late Baroque period. The exquisite gemstone buildings were originally commissioned by Grand Master Pinto to be used as stores by the Knights of St. John.

The iconic doors of the heritage buildings have been revived today with an artistic impression of colour. From days past, the coloured doors represented the storage of goods, with blue for fish, green for produce, yellow for wheat and red for wine.

Ushering in a modern era while delicately blending the old with the new, these treasured structures have been transformed into a diverse variety of convenient commercial services stretching along the water's edge. The Valletta Waterfront is the key element of the Valletta Cruise Port, and the recognized centre for all cruise activity.



AT YOUR SERVICE

Valletta Cruise Port is host to a natural deep-water harbour, offering access to all sized ships, year-round. There are two passenger terminal facilities with the main terminal located in the historic Magazino Hall. It is fully modernized and equipped with all necessities, including check-in counters, a comfortable waiting area, and accessibility for guests with different abilities.

A fiber optic connection from Magazino Hall to the ship allows for simultaneous onboard registration and check-in. The facilities are easily capable of processing in excess of 1,000 guests per hour.

Malta's convenient size makes everything within close proximity. Whether for homeporting or turnaround operations, Valletta Cruise Port is just minutes away from Malta International Airport. The airport handles over six million passengers per year for both scheduled and non-scheduled services connecting to all major and secondary European cities and valuable source markets. A wide variety of major hotels are also available and the capital city of Valletta is a short fifteen-minute walk to the port. Thus, Malta offers the exciting opportunity to combine air or land and cruise tours.



CRUISE TERMINALS

Open 24/7 year-round check-in facilities; baggage services; accessibility for passengers with different abilities



SAFETY & SECURITY

ISPS-compliant



WIRELESS CONNECTION

Both terminals



CABLE CONNECTION

Cat. 5 and fibre-optic



CHECK-IN COUNTERS

Available



SCREENING EQUIPMENT

X-ray machines; hand luggage X-ray machines; walk-through detectors and handheld scanners.



OTHER TERMINAL EQUIPMENT

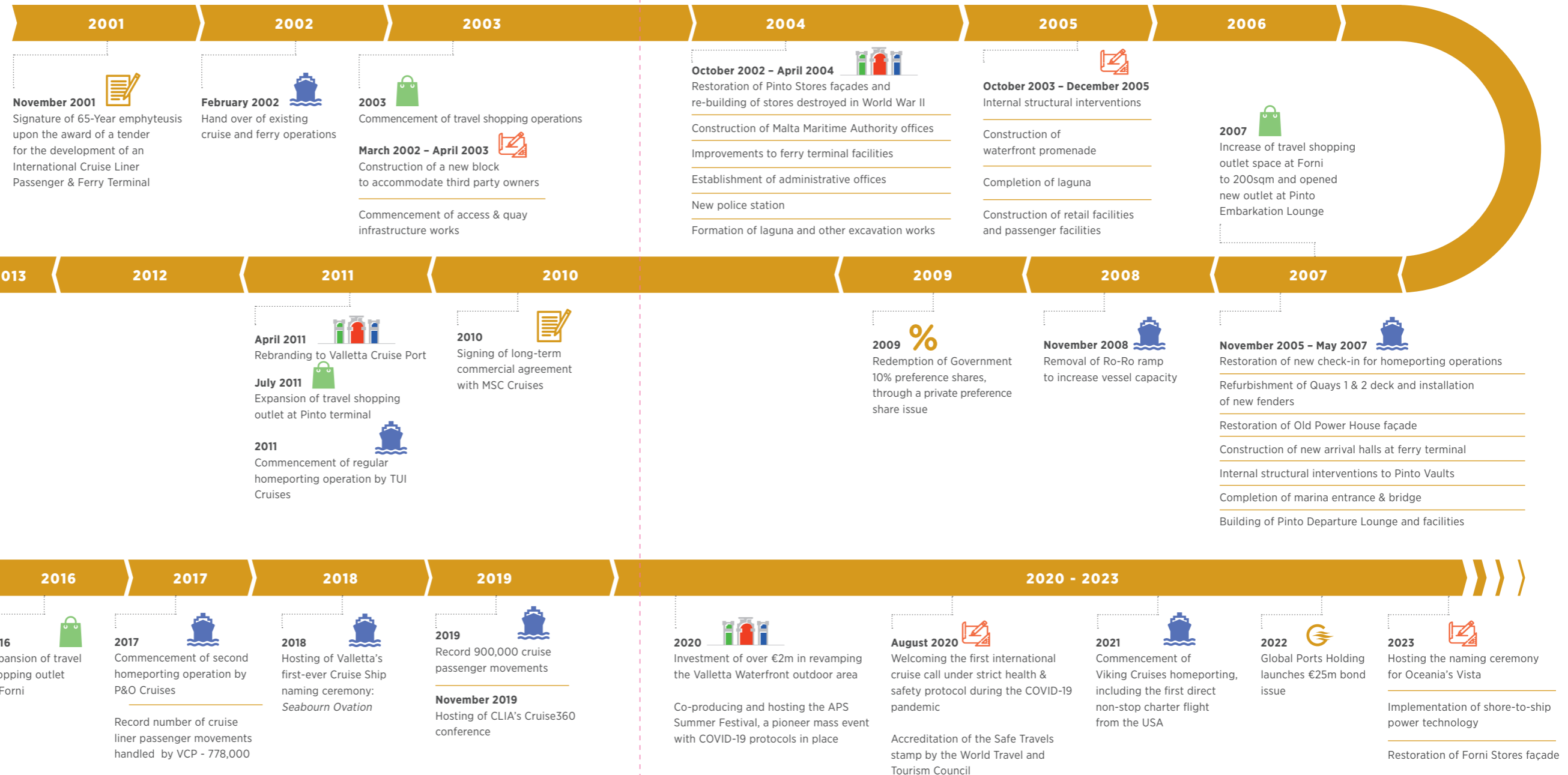
Fixed tent 60m x 10m (total 600sqm); large covered wagons; large and small push trolleys; forklifts; luggage handling equipment: tow trucks; conveyor belt; additional equipment including cranes available on request.



ONSHORE POWER SUPPLY

Quays 1 - 2 & Boiler Wharf Quay partially commissioned; infrastructure development for Quays 4 - 5 in progress; Onshore Power Supply (OPS) will be readily available once the regulatory framework is in place.

OUR MILESTONES



OUR PROMISE AND COMMITMENT

With a “can do” spirit and attention to detail Valletta Cruise Port makes a commitment to deliver a dependable operation based on the highest standards in the industry. No task is too small and we are up for the challenge. Just like the 18th century buildings have withstood the test of time, we have built a solid foundation and a reliable reputation over the years.

Having developed close relations with Government agencies and garnered the respect and cooperation of the local and international stakeholders and agents, this synergy allows everyone to respond as a unified team.

Transport Malta - the maritime authority, and the pilots association have invested in this commitment as well, which has included the acquisition of state of the art technology simulators. They offer continuous Grand Harbour safety manoeuvre training to the master of the vessel and fellow officers.

Malta has consistently received the highest ratings from both guests and the maritime industry. As an EU member, you can count on Malta for peace of mind and a consistent addition to any itinerary. Our confidence and ability to convey this promise is paramount.



20+ years continuous safe service record



Over 900,000 annual passenger movements



Consistently ranking high on guest ratings



Direct communications with executive management



International & industry awards



Successful transit, homeporting, and turnaround operations.



Attracting new source markets



Flexible, efficient and competitive



Guaranteed response time



AWARDS AND RECOGNITION

In all aspects of its operation Valletta Cruise Port is customer-driven, seeking to provide seamless experiences for its patrons, based on the needs and expectations of cruise lines, passengers and crew, whilst maintaining the destination’s unique identity. Valletta Cruise Port is focused on all aspects of the passenger experience from arrival to departure, with attention to detail. Together with other stakeholders Valletta Cruise Port works relentlessly to ensure that Malta continues to excel as a destination. Testament to this are the awards that Valletta Cruise Port has bagged, coupled by the excellent passenger satisfaction ratings.



BEST PORT OF CALL GLOBAL



WORLD'S BEST CRUISE TERMINAL FOR SUSTAINABILITY



EUROPE'S BEST CRUISE TERMINAL

WORKING IN SYNERGY

VALLETTA CRUISE PORT IS A PROUD MEMBER OF:

Cruise Lines International Association (CLIA)

The Malta Maritime Forum

MedCruise

The Malta Chamber of Commerce

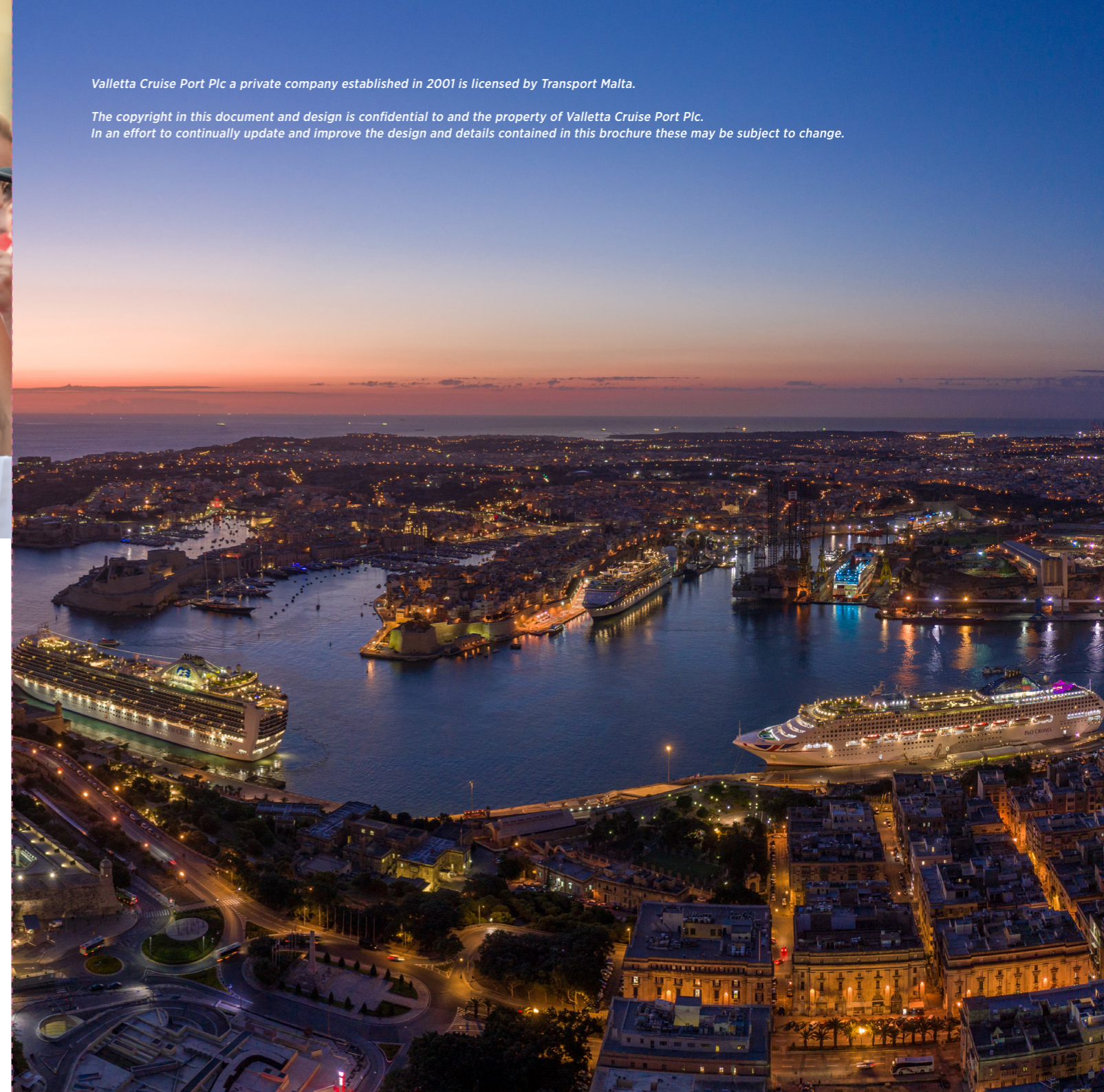
The Malta Employers' Association

The Malta Cruise Network Forum



Valletta Cruise Port Plc a private company established in 2001 is licensed by Transport Malta.

The copyright in this document and design is confidential to and the property of Valletta Cruise Port Plc. In an effort to continually update and improve the design and details contained in this brochure these may be subject to change.



SOCIAL RESPONSIBILITY

Valletta Cruise Port understands that its activities impact local communities and the environment in various ways and takes its responsibilities seriously. Valletta Cruise Port, also through the Valletta Waterfront destination, is committed to carrying out its activities responsibly, with the aim of leaving a positive impact through its operations.

To this effect, Valletta Cruise Port has signed the UNWTO Private Sector Commitment to the Global Code of Ethics for Tourism. This Code is a frame of reference for responsible and sustainable tourism development as endorsed by the United Nations General Assembly in 2001. By adhering to the Code, Valletta Cruise Port commits to implementing and promoting the Code's 10 principles in its business strategies and operations, covering the economic, social, cultural and environmental components of its activities.

Furthermore, Valletta Cruise Port is actively involved in the community, and supports a number of honourable causes particularly those with a humanitarian and social impact, in the areas of art and culture, and the environment.

Additionally, Valletta Cruise Port has completed Phase 1 of a new environmental risk management system following the ISO 14001:2015 standards.



A subsidiary of



Valletta Cruise Port Plc.

Vault 1, Upper Floor, Floriana FRN 1913, Malta

T +356 2567 3000 **E** info@vallettacruiseport.com

www.vallettacruiseport.com

